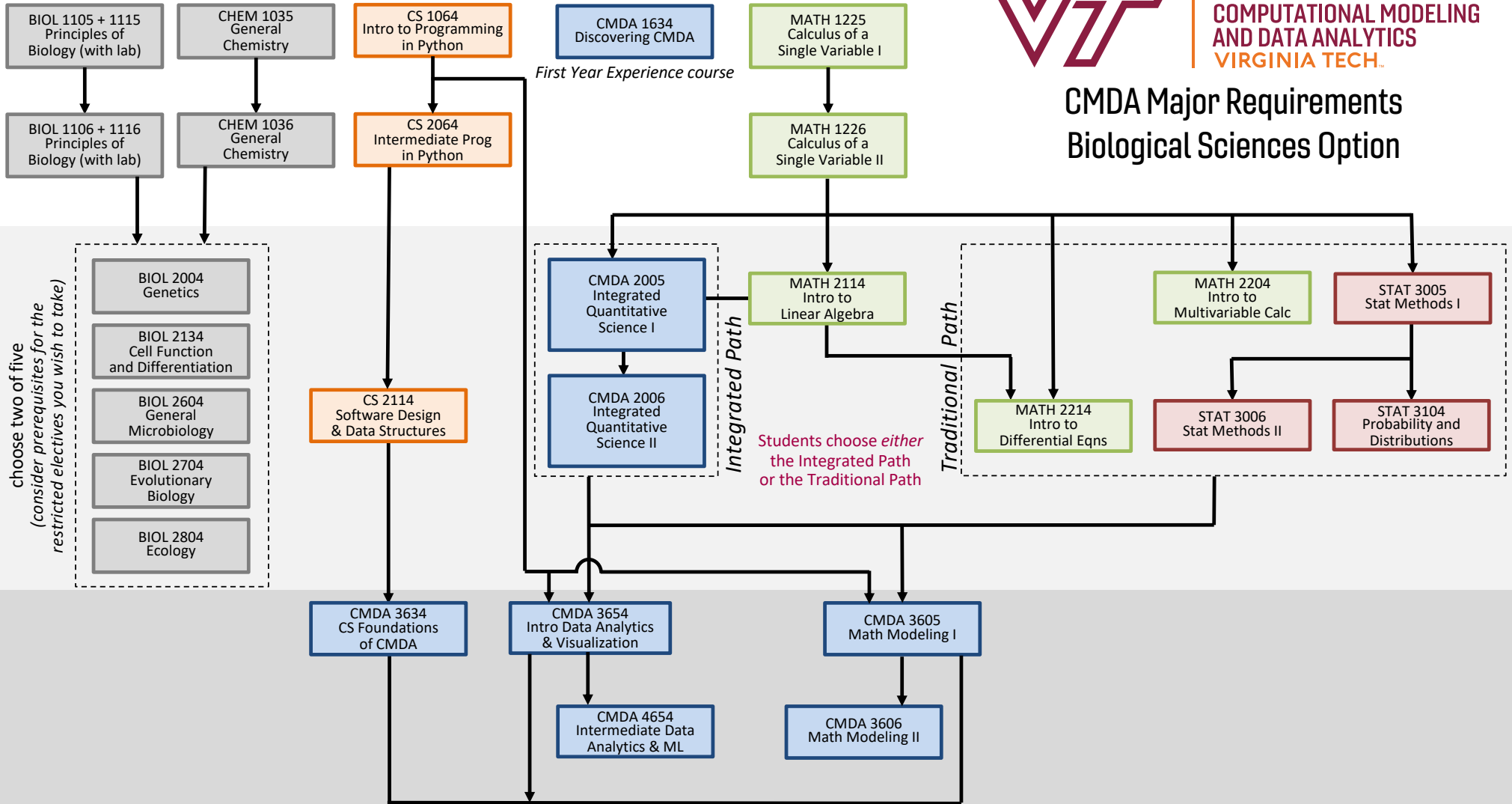




CMDA Major Requirements Biological Sciences Option



choose two of five
 (consider prerequisites for the
 restricted electives you wish to take)

Integrated Path

Traditional Path

Students choose *either*
 the Integrated Path
 or the Traditional Path

+ 3 elective courses
 (2 from the BIOL/SYSB list,
 1 from the CMDA list)
 At most one Undergraduate Research
 course may be counted.

- BIOL/SYSB electives include the following:*
- SYSB 3035 Genomics and Bioinformatics (4 credits)
 - SYSB 3036 Genomics and Bioinformatics (4 credits)
 - SYSB 3115 Network Dynamics and Cell Physiology (4 credits)
 - SYSB 3116 Network Dynamics and Cell Physiology (4 credits)
 - BIOL 4004 Freshwater Ecology (4 credits)
 - BIOL 4114 Global Change Ecology
 - BIOL 4134 Evolutionary Genetics
 - BIOL 4564 Infectious Disease Ecology
 - BIOL 4624 Microbial Genetics
 - BIOL 4664 Virology
 - BIOL 4874 Cancer Biology

**CMDA 4864
 CMDA Capstone
 Project** CMDA 4864 (CMDA Capstone) requires the prerequisites
 of CMDA 3605, 3634, and 3654. Students are encouraged
 to take CMDA 3606 and 4654 before or alongside Capstone.

- CMDA electives include the following:*
- CMDA 4664 Computational Intensive Stochastic Modeling
 - CS 3824 Intro to Computational Biology and Bioinformatics
 - FREC 3044 Environmental Data Science
 - MATH 4454 Applied Mathematical Modeling
 - STAT 4364 Introduction to Statistical Genomics